



TRAP (ABT239) Mouse mAb

Catalog No	YP-Ab-15212
Isotype	IgG
Reactivity	Human
Applications	IHC
Gene Name	ACP5
Protein Name	Type 5 acid phosphatase;Acid phosphatase 5 tartrate resistant;Acid phosphatase 5, tartrate resistant;ACP5;EC 3.1.3.2;MGC117378;PPA5_HUMAN;serum band 5 tartrate-resistant acid phosphatase;SPENCDI;T5ap;
Immunogen	Synthesized peptide derived from human TRAP
Specificity	The antibody can specifically recognize human TRAP protein.
Formulation	PBS, pH7.2, 0.03% Porcolin 300, containing stabilizing protein
Source	Monoclonal Mouse IgG2a, Kappa
Purification	The antibody was affinity-purified from mouse ascites by affinity-chromatography using specific immunogen.
Dilution	IHC-p 1:200-400,
Concentration	1 mg/ml
Purity	≥90%
Storage Stability	-20°C/1 year
Synonyms	Type 5 acid phosphatase;Acid phosphatase 5 tartrate resistant;Acid phosphatase 5, tartrate resistant;ACP5;EC 3.1.3.2;MGC117378;PPA5_HUMAN;serum band 5 tartrate-resistant acid phosphatase;SPENCDI;T5ap;Tartrate resistant acid ATPase;Tartrate resistant acid phosphatase type 5;Tartrate resistant acid phosphatase type 5 precursor;Tartrate-resistant acid ATPase;Tartrate-resistant acid phosphatase type 5;TR AP;TR-AP;TRACP 5;TRAP;TrATPase;Type 5 acid phosphatase
Observed Band	
Cell Pathway	Cytoplasmic
Tissue Specificity	Lung
Function	catalytic activity:A phosphate monoester + H(2)O = an alcohol + phosphate.,cofactor:binds 2 iron ions per subunit.,disease:This relatively minor intracellular isozyme of acid phosphatase can become the dominant isozyme in certain pathological states (Gaucher and Hodgkin diseases, the hairy cell, the B-cell, and the T-cell leukemias).,similarity:Belongs to the metallophosphoesterase superfamily. Purple acid phosphatase family.,subunit:Exists either as monomer or, after proteolytic processing, as a



dimer of two chains linked by disulfide bond(s).

Background

This gene encodes an iron containing glycoprotein which catalyzes the conversion of orthophosphoric monoester to alcohol and orthophosphate. It is the most basic of the acid phosphatases and is the only form not inhibited by L(+)-tartrate. [provided by RefSeq, Aug 2008],

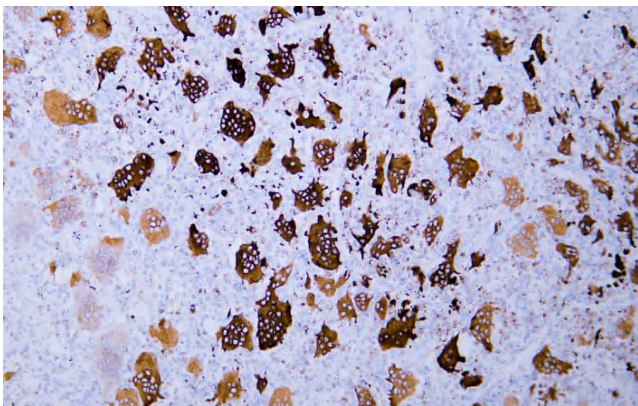
matters needing attention

Avoid repeated freezing and thawing!

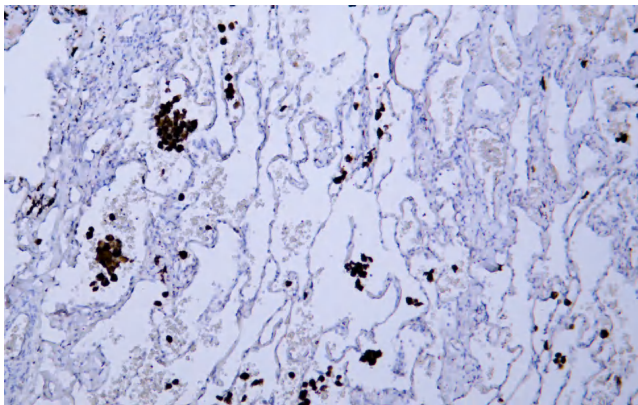
Usage suggestions

This product can be used in immunological reaction related experiments. For more information, please consult technical personnel.

Products Images



Human giant cell tumor tissue was stained with Anti-TRAP (ABT239) Antibody



Human lung tissue was stained with Anti-TRAP (ABT239) Antibody